

SAVE THE DATE
19 NOV 2023

Pears
Foundation

SHORESH
TRUST

bloom
FOUNDATION

THE JC
THE JEWISH CHRONICLE

AJEX
THE JEWISH MILITARY
ASSOCIATION UK

Balfour House, 1st Floor, Office 127, 741 High Road, North Finchley, London, N12 0BP +44 20 3747 9960

info@mitzvahday.org.uk www.mitzvahday.org.uk  @MitzvahDayOfficial  @MitzvahDay Charity no. 1125682

**Mitzvah
Day**



**ANNUAL
REPORT
2022**

Contents

A Letter from the Prime Minister	4
A Message from our Chief Executive	5
What is Mitzvah Day?	7
Our Impact	9
Winter Warmers 2022	11
Mitzvah Day International	13
In the News	15
What they said...	17
Spotlight on Interfaith	21
Spotlight on Youth	23
Spotlight on Charities	24
From the Mitzvah Day Community	25
Thank You	27



10 DOWNING STREET
LONDON SW1A 2AA

14 November 2022

THE PRIME MINISTER

Mitzvah Day is a very special time of year, with thousands of people up and down the country coming together to help others. It helps to foster a wonderful community spirit, celebrating diversity of faith or belief, and demonstrating that we each have a responsibility to one another.

This year's theme of Winter Warmers is particularly apt and I know our communities will rally round with donations of warm clothing, and generally reach out with compassion to those who need it the most.

I would like to wish everyone involved a hugely successful Mitzvah Day and to express my heartfelt gratitude to all the volunteers taking part.

Best wishes,

Rishi

A Message from our Chief Executive Stuart Diamond



And I heard the voice of the Lord, saying, 'Whom shall I send, and who will go for us?' Then I said, 'Here am I (Hineni)! Send me.' - Isaiah 6:8.

When the Mitzvah Day Board invited me to take the reigns of this much beloved Jewish British charity, I knew that this was an exciting opportunity I could not turn down – this was my “Hineni” moment.

The phrase “Here am I” has a heroic ring to it. It was the prophet Isaiah’s courageous response to God’s calling. During difficult times for people all around the world, we called on British and Global Jewry to answer us and say, “Here am I”. Through our Winter Warmer campaign for Mitzvah Day 2022, the answer was loud and powerful. An estimated 55,000 volunteers and 750 organisations from 41 countries came together to address the wellbeing of others through our day of social action.

What I have learnt in my short time in post is that Mitzvah Day demands that our actions be based in chesed. Like many Hebrew words, it means more than its usual English translation of ‘kindness’ or ‘lovingkindness’. Chesed means giving oneself fully, with love and compassion. The fact that this concept of chesed appears in the Torah more than 190 times indicates its importance in the lives of Jews. We need fierce determination to action our commitments – and we need bucket-loads of chesed.

Guided by the Jewish values of Tikkun Olam (repairing the world), Gemilut Chasadim (acts of kindness), and Tzedek (justice) – with a bold vision of people of all faiths coming together to build more cohesive neighbourhoods and strengthen civil society through meaningful interfaith work – Mitzvah Day has values that align perfectly with those to which I and so many other people aspire.

A personal highlight for me was getting to see, and participate in, so many Mitzvah Day projects devised, prepared, and run by local

communities – from planting and cleaning gardens, knitting with Holocaust survivors and refugees, to participating in wrapping toys and cooking food. Whilst focussed on one day, we know Mitzvah Day leads to long-term relationships with neighbours and with the charities which need us.

Reflecting on Mitzvah Day 2022, I am struck by the astonishing contribution of participating organisations and volunteers. Through their creativity and commitment to local charities and to building relationships, Mitzvah Day has come through the pandemic stronger and more relevant than ever.

On behalf of the professional staff, I wish to thank our funders, suppliers, trustees and most importantly, the volunteers, and we look forward to continuing our work together in 2023.

Stuart Diamond
Mitzvah Day Chief Executive

What is Mitzvah Day?

Mitzvah Day brings people of all faiths and backgrounds together through Jewish-led social action.

Based upon the Jewish values of **Gemilut Chasidim** (acts of kindness), **Tzedek** (justice) and **Tikkun Olam** (repairing the world), it is the **largest interfaith day of social action in the UK** and is a key calendar event for Jewish communities.

Mitzvah Day brings thousands of people together, to give our most valuable possession: our time. We strive to make a positive difference in the communities around us on Mitzvah Day and throughout the year by encouraging and celebrating volunteering and building relationships with people we may not usually meet to build a strong civil society.

On Mitzvah Day, communities and individuals are empowered to engage in a wide variety of social action projects, including visiting older or lonely people; collecting clothing to donate to refugees; replenishing food bank stores; cooking for homeless people, and taking part in environmental projects. All these projects facilitate genuine connections between communities, individuals, and the charities they support, using social action as the way to connect.

In 2022 we focused on 'Winter Warmers', projects which tackled the metaphorical and actual cold winds blowing through a world in conflict. Hands-on and little by little, we each contributed to a kinder, warmer and more connected world.



41
countries

750+
organisations

2,250+
projects

55,000+
volunteers

Our Impact

We aim to have a positive impact on people's lives through social action. This can be seen through Mitzvah Day's goals: **to engage in social action, to increase the amount of social action and allow more causes, areas and people to benefit from support.**

Mitzvah Day supports the work of charities and community groups, increasing the effectiveness, sustainability and power of the charitable and voluntary work delivered by our charity partners.

Our ambition to foster positive attitudes towards Jews in society relates to social cohesion. Mitzvah Day is able to strengthen connections and relationships between Jews and the wider community. Firstly by encouraging and

facilitating positive contact and collaboration between Jews and people from other faiths and cultures and secondly by raising the profile of Jewish-led social action.

We're an international organisation, but at the heart of our impact is local action and change. We seek to facilitate and inspire locally-led action that can be entirely different in each city, town and street across the UK and around the world.



We build a strong sense of civic participation by providing the tools to enable people to improve their communities in ways that are needed locally.

This is achieved by focusing on our five core areas of activity...

1. Creating social action
2. Strengthening civil society
3. Creating sustainability
4. Facilitating relationships
5. Growing the capacity, capabilities and success of our Charitable Trust

Winter Warmers 2022

Laura Marks OBE



Whether Mitzvah Day fell in early summer – in Australia or South Africa – or in the darkness of early winter in Switzerland or Scotland, we all felt chill winds in 2022. We have struggled with defining our post-pandemic reality including its impact on mental health and loneliness, with economic downturns, the ongoing environmental crisis, multiple refugee crises, the desperate situation in Ukraine and with the increases in racism and hate crime. Our 'Winter Warmers' campaign reflected the need for warmth across the globe regardless of the weather.

People came together in their thousands, to bring physical or emotional warm hugs to our neighbours – both those we already know in the Jewish community – or people from other faiths and backgrounds. Importantly we did it together, Mitzvah Day forming a bridge for making new friendships and links between communities, and between communities and charities which need us.

This Mitzvah Day thousands of volunteers were knitting warm hats and scarves, bundling up coats and clothing for people with stretched resources, making hot soup and sharing it with people who had hit bad times, or visiting neighbours and care homes where people needed some company. Each project brought people together to share the task but also to meet new people and to form new and long-lasting relationships.

Mitzvah Day is a facilitator. It opens doors for people who are looking for ways to connect and to make a real local difference. We introduce non-Jewish people to Jews, we connect communities with local charities, we even facilitate links between Jews and Jews, locally, nationally and internationally. Crucially all our projects are designed to be done again... and again. Mitzvah Day is the start, but it is never the end of making positive change.

We start with one act of kindness and, as it says in Pirkei Avot, the Sayings of the Fathers; 'mitzvah goreret mitzvah', one mitzvah leads to another.

One Mitzvah Day inevitably leads to another and we look forward to seeing everyone on 19 November 2023 for this year's Mitzvah Day!

Laura Marks OBE
Mitzvah Day Founder



Mitzvah Day International

Mitzvah Day started in the UK, but it is now a truly international movement of collective social action. **This year participants volunteered in 41 countries** from all around the world supporting the local charities which so desperately need us.

From South America to South Africa, Germany to Brazil - together with Mitzvah Day in England, Scotland, Wales and for the first time, Northern Ireland - the Mitzvah Day message spread across the globe. We put the **“world”** in the Jewish value of **“repairing the world”**.

Countries that took part in Mitzvah Day 2022:

- | | | | |
|-------------|-----------|---------------------|---------------|
| Argentina | Finland | Namibia | South Africa |
| Australia | France | Netherlands | Spain |
| Belarus | Germany | New Zealand | Switzerland |
| Belgium | Greece | Northern Ireland | Ukraine |
| Brazil | Guatemala | Panama | United States |
| Canada | Hungary | Paraguay | Uruguay |
| Chile | Israel | Peru | Venezuela |
| Costa Rica | Italy | Poland | Wales |
| Croatia | Lithuania | Republic of Ireland | |
| El Salvador | Malta | Scotland | |
| England | Mexico | Slovakia | |





This Mitzvah Day people across the country came together to carry out mitzvot, or good deeds, by giving their time to help others. It's emblematic of the country we are, and the values we hold.

I'm delighted to have played my part at South Hampstead Synagogue in my constituency. They collected donations for local charities and had an incredible response from the community.

By donating time rather than money, Mitzvah Day's volunteers make a difference to the projects they support whilst also building and strengthening relationships with their friends and neighbours from different backgrounds."

Sir Keir Starmer
Leader of the Labour Party

What they said...



I'm delighted to see the Jewish community bringing together people of many faiths for a day of action based on social issues.

This year's Mitzvah Day is based on the theme Winter Warmers – a particularly appropriate theme at the moment, with the clocks going back and the days getting shorter.

The day will involve, amongst other things, volunteering, donating clothes and reaching out to those who suffer from loneliness.

Through this truly interfaith action, our communities are making a practical contribution to people who may be struggling as winter approaches. I send my best wishes to all those involved in Mitzvah Day, for what I know will be a great success."

Nicola Sturgeon
Former First Minister of Scotland



People from the Muslim, Jewish, Hindu, Sikh, Christian and other faith communities come together as one on Mitzvah Day. It really does show interfaith at its best."

Reverend Jenny Ramsden
Interfaith Adviser to the Diocese of Leeds



As Reform Jews we regard the sacred mission of perfecting the world we live in – tikkun olam – as one of our core values. We try to play our part as active citizens for one another, wider society and our world and Mitzvah Day is the best opportunity to collectively put this ideal into action.

Mitzvah Day encourages our communities, and all its members, of all ages, to make a difference in the world by reaching out to local charities, getting involved in local projects, and make long lasting connections in the wider world and to actively make the world a better place."

Rabbi Kathleen Middleton
Co-Chair of the Assembly of Reform
Rabbis and Cantors



Mitzvah Day is one of the most wonderful initiatives of the British Jewish community and now well beyond it.

I offer my congratulations to all those who are organising Mitzvah Day at central level and, of course, the tens of thousands of you taking part in activities and projects within your synagogues, communities and organisations.

Mitzvah Day is truly incredible and I can't wait for it. And let us not forget that Mitzvah Day reminds us that we can perform mitzvot on every single day."

Chief Rabbi Ephraim Mirvis
Chief Rabbi of the United Hebrew
Congregations of the Commonwealth



Liberal Judaism is really delighted and proud to once more be participating in Mitzvah Day this year.

It is an opportunity to consolidate all we do during the year, bring focus and enthusiasm to our chosen projects and build real and lasting partnerships across faiths."

Rabbi Rebecca Birk
Co-Chair of the Conference of Liberal
Rabbis and Cantors



Mitzvah Day shows what takes place when we dare to imagine a human society where flourishing is at its heart, and we dare to support our fellow human beings. Together we make something beautiful."

Imam Qari Asim
Chair of the Mosques and Imams
National Advisory Board



“Having a multifaith team is a wonderful way to demonstrate that people of different faiths, and none, can and do work together in harmony, and most importantly can be, and are friends.”

Yvonne Stollard
Worcestershire Interfaith Forum

“Mitzvah Day is good for mental health as it makes people have a purpose to get out of the house and do something good for the environment. A win-win situation!”

JAMH
Jewish Action for Mental Health

“Mitzvah Day 2022 in Barnet is evidence of how a small act of kindness can bring together so many local people, from a variety of faiths and backgrounds whilst highlighting the issue of climate change. Never ceases to amaze!”

Monna Rizvi
Barnet Multi Faith Forum

“Mitzvah Day is always a major event in our calendar - one that we look forward to, spend a lot of time planning for and always thoroughly enjoy. It's a pleasure to be involved in an event which is so well supported by the team and which has such an immediate, positive impact on so many different communities.”

Corrine Linskell
Stanmore & Canons Park Synagogue



“Mitzvah Day has become such a symbol of unity in Cumbria - a place where there are so few Jews. Each year our Mitzvah Day projects have grown out of proportion and end up being run as ongoing programs.”

Abigail Mann
Mitzvah Day Coordinator, Cumbria

“Maidenhead Synagogue's Cheder and members blazed ahead on Mitzvah Day, despite a fire emergency to start our day! Twelve projects, 80 volunteers from Jewish, Christian and Muslim backgrounds, including our Mayor of Maidenhead, and Ukrainian Refugee families, toddlers to senior citizens - all took part and made their mark! And the best part is all the people who have asked if we can keep going and do more the whole year through!”

Alexandra Dominigue
Maidenhead Synagogue and Cheder

“Our young people really enjoyed the opportunity to meet new people and find out more about Judaism too.”

Jo Lewis Burgess
St Luke's, Peckham

“My favourite thing during Mitzvah Day 2022 was seeing my own community enthusiastically working together with other faith groups.”

Nick Grant
St Albans Masorti Synagogue



Spotlight on Interfaith

Mitzvah Day is one of the largest interfaith events in the world and brings people of all faiths and no faith together for meaningful, side-by-side social action. **At Mitzvah Day, we believe in interfaith social action as a vehicle for societal change. We encourage and enable volunteers to bring together people who rarely meet through the transformative power of small acts of kindness.**

Mitzvah Day is an invitation and a call to celebrate what we have in common and give a helping hand to local causes that are right on our doorsteps. Mitzvah Day is unique because it transcends the Jewish Community, giving volunteers the opportunity to stretch out a hand of friendship to our neighbours, to participate in projects and then, with our support, to create long-lasting relationships that continue well beyond the third Sunday each November.

As former Chief Rabbi Lord Jonathan Sacks wisely said:

"The test of faith is whether I can make space for difference. Can I recognise God's image in someone who is not in my image, whose language, faith, ideals, are different from mine? If I cannot, then I have made God in my image instead of allowing Him to remake me in His."



Immanuel Project, Bradford

The Immanuel Project in Bradford saw members of the Diocese of Leeds, Bradford Reform Synagogue, The Bradford Synagogue and the Bradford Muslim community came together to cook curry for guests, both rough-sleepers and homeless. Those cooking included Rev Jenny Ramsden and Bishop Toby Robinson and it gave people of faith the chance to bond over the hob, while helping those in need.



Barnet Multi Faith Forum

Middlesex University Interfaith Network and Barnet Multi Faith Forum planted snowdrops at St Mary's Church, Hendon, to remember victims of the Holocaust. Members of the Christian, Jewish, Muslim, Hindu and Greek Orthodox faiths – including Barnet Deputy Mayor Nagus Narenthira – took part. It was a particularly poignant day, as the church had previously received support from faith community neighbours when its churchyard suffered a series of devastating acts of vandalism and desecration.

Gratitude



Food poverty charity, Gratitude and Garden On A Roll teamed up with faith communities and schools in a mass flower-planting project that brought children, families and people of different backgrounds together to aid local biodiversity, improve the environment and counteract climate change. In the days leading up to Mitzvah Day, all across Hertfordshire, volunteers performed weeding and raking of open areas of land and then, on the day itself, they engaged in mass planting of bulbs; daffodils, narcissus, crocuses and other seasonal flowers. Local Christian, Hare Krishna, Muslim and Jewish communities took part and their places of worship either had planters delivered to them opened up their garden/wooded areas to facilitate this initiative.

Inter Faith Week



Mitzvah Day is proud to be an integral part of Inter Faith Week, taking place on the final day of this important moment for our faith communities. The aim is to highlight the good work done by local faith-based groups and organisations and, each year, many projects take place to jointly mark Inter Faith Week and Mitzvah Day. Just like Mitzvah Day, Inter Faith Week enables greater interaction between people of different backgrounds and helps develop integrated and neighbourly communities – opening new possibilities for collaboration and partnership through the year.

Spotlight on Youth

The first experience of Mitzvah Day often comes when parents bring babies or toddlers to visit a care home or day centre. These projects are accompanied by intergenerational laughter, singing and storytelling.

As children get older and start school and or cheder, there are more opportunities for them to get involved in Mitzvah Day. Projects at this age range from collectathons and bake-offs through to card-making and care home visits.

As secondary school beckons, Mitzvah Day gives our young volunteers a chance to really start cementing their Jewish values and belief in social justice. Our secondary projects are enhanced when Jewish pupils share projects with their peers of all faiths and backgrounds - whether taking place in a secular school or seeing Jewish schools unite with their local Christian or Muslim counterparts.



Spotlight on Charities

Over the past fourteen years, Mitzvah Day volunteers have created long and lasting partnerships with hundreds of charities.

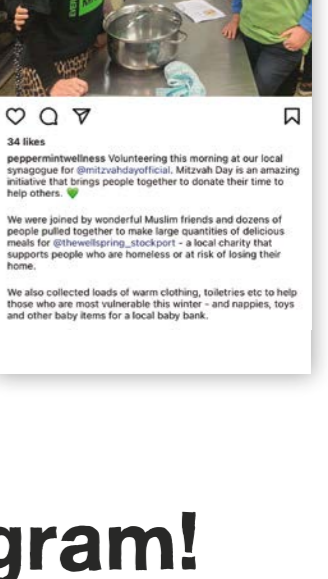
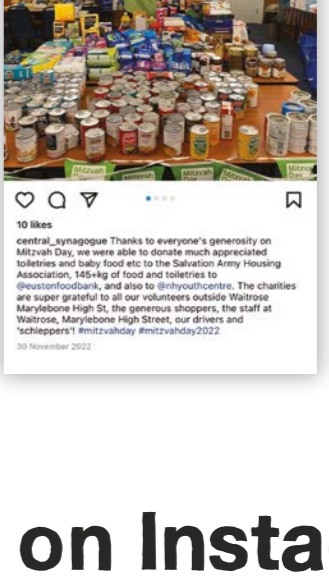
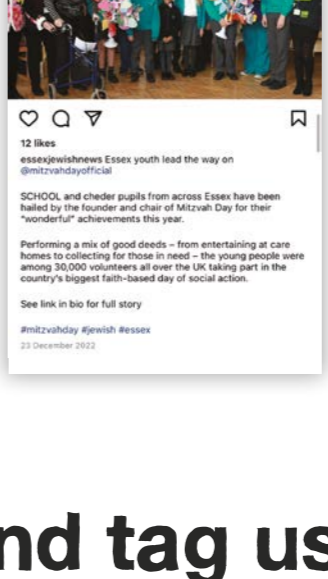
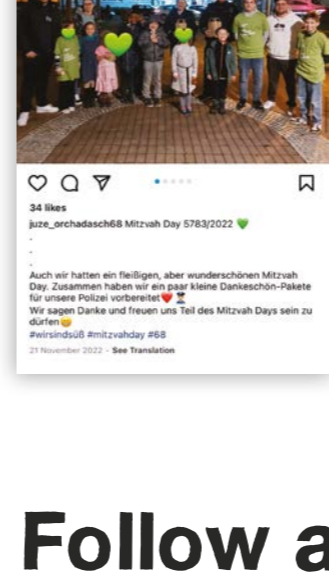
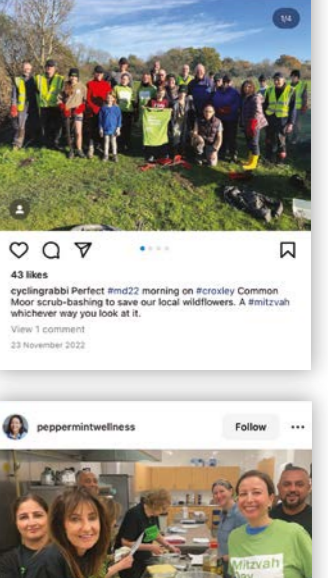
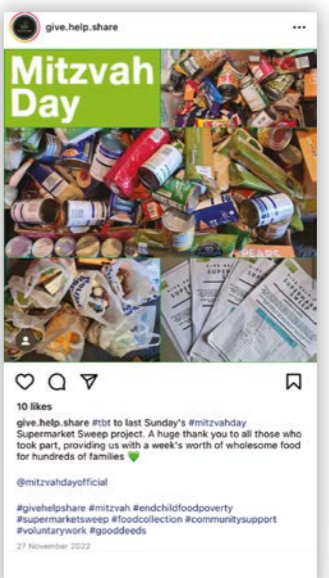
This has enabled volunteers to engage in projects such as replenishing foodbank stores, preparing meals for their local homeless shelters, collecting stationery for refugees, visiting care homes, running community-led blood donation sessions, spit drives for bone marrow, gardening at hospices and many more.

At Mitzvah Day, we connect volunteers to charities both on our doorstep and abroad, from a local St Mungo's shelter helping vulnerable and homeless people, to Save a Child's Heart in Israel, providing life-saving heart surgery to children. It's these connections that serve to educate both the young and old on the diversity of needs in the world and provide the tools to be part of our humanitarian response.

When Mitzvah Day enabled students from a Jewish school and a Muslim school to volunteer at a Muslim-run foodbank, or when Mitzvah Day supported a synagogue to open its doors to local asylum seekers, the benefits were immediately visible.



From the Mitzvah Day Community



Follow and tag us on Instagram!
@MitzvahDayOfficial

Thank You to all of our supporters

Major Donors

All Aboard
Bloom Foundation
Charles Wolfson Charitable Trust
Davis Foundation
Graham & Georgie Edwards
Harold Hyam Wingate Foundation
Lord Ian and Lady Debbie Livingston
Pears Foundation
Peter Oppenheimer – Goldman Sachs Gives
Rachel Charitable Trust
Roden Family
Sara and Paul Philips
Shoresh Trust

Mitzvah Day Friends

Mitzvah Day Friends
ABG Group
Alan Myers
Alexandra Marks
Andrew and Orly Wolfson
Angela Niman
Annie Jacobs
Anita and Jeffery Walker
Arnold Clark Foundation
Beaverbrooks Charitable Trust
Benson and Lionel Black Charitable Foundation
Bianca and Gary Sakol
Dalia Coleman
Denise and David Joseph
Edwin and Esther Shuker
Eric Murciano
Geiger BTC
Harold and Mignon Franks
Jacqui and Simon Rickman
James Diner
James Ward
Jason Gottschalk
Jeremy Franks and Chris Lenihan
Joe Habib
Joy and Michael Lyons Foundation
Judith and Uri Mitzrahi
Judy and Paul Dewinter
Justin Bernstein
Laura Marks and Dan Patterson
Lee Sidney
Lindy and Stuart Diamond
Loftus Foundation
Lord Howard and Lady Jennifer Leigh
Michael Lewis
Nimrod Capital LLP
Paul Martin
Raymonde Jay
Richard Hasson
Ron Dee
Stacy Eden
Sharon Horwitz
Sir Trevor and Lady Susan Chinn
Sir Victor and Lady Sylvia Blank
Steven and Alicia Lewis
Susan Charles and Richard Goldstein
Suzanne Freeda
The Bergman Lehane Trust
The Manson Family Charitable Trust
The Ralph Levy Charitable Company
The Worth Charitable Trust
Telereal Trillium
8Original
and other anonymous donors.

With Special Thanks

Pears Foundation, for its indefatigable partnership, guidance, and support.

Inter Faith Network for the United Kingdom, especially their annual Inter Faith Week that promotes and encourages members to participate in Mitzvah Day.

Graphical, for the years of inspired designs that have brought the Mitzvah Day brand to life.

A special thank you goes to all our charity partners, with whom we work so closely, to create sustainable Mitzvah Day projects supporting the essential work they do.

The Mitzvah Day Trustees for their unwavering support and commitment to ensuring our stability and sustainability:

Laura Marks OBE – Founder & Chair

Debra Morris - Treasurer

Judy Mizrahi

Edwin Shuker

Lee Davis

David Ginsburg

Lucy Maislish

Peter Oppenheimer

Sharon Horowitz

Nick Grant (observer)

The Mitzvah Day Staff and Contractors for their continued excellence in delivering and growing Mitzvah Day year on year.

UK Participating Organisations

17th Bushey Brownies
20th Finchley (Woodside Park) Scout Troop
3rd Edgware Brownies
4th Borehamwood Guide & Ranger Guide Joint Unit
5th Gatley Brownies
6th Edgware Brownies
7 Hills Sheffield & District Reform Jewish Congregation
Adat Yeshua Messianic Synagogue
Aerin Diamond Household
Ahavat Yisrael
AJEX
Akiva Primary School
Al-Zahra School
Alel Tzion
Alexandra Klegg Household
All Aboard Shops
Alma Primary
Alonim Kindergarten (Sha'arei Tsedek Synagogue)
Alyth JOY Joining Old and Young
Alyth Kindergarten
Alyth NWRS
Alyth Cheder
Apples And Honey Nightingale Nursery
Apples and Honey Wimbledon
Barclay Household
Barnet Multi Faith Forum
BAT (Bnei Akiva Tribe)
BBYO UKI
Bedfordshire Progressive Synagogue (Rodef Shalom)
Beit Klal Yisrael (BKY Liberal Community)
Beit Shvidler Nursery
Beit Shvidler Primary School
Belarus - The Together Plan Communities
Belmont United Synagogue
Belsize Square Cheder Group 1
Belsize Square Cheder Group 2
Belsize Square Synagogue
Belsize Square Synagogue Youth
Beth Shalom Reform Cheder
Beth Shalom Reform Synagogue
Bhaktivedanta Manor Primary School
Birmingham Progressive Synagogue
Bnei Akiva
Board of Deputies of British Jews
Borehamwood and Elstree Synagogue
Borehamwood Islamic Society Religion School
Bournemouth Hebrew Congregation
Bournemouth Reform Cheder
Bournemouth Reform Synagogue
Bowdon Community Cares
Brighton and Hove Progressive Cheder
Brighton and Hove Progressive Synagogue
Brighton and Hove Reform Synagogue
Brighton and Hove Reform Synagogue Cheder
Brodetsky Primary School
Bromley Reform Synagogue
Bromley Reform Synagogue Cheder (Chai School)
Bromsgrove School
Brondesbury Park Cheder
Brondesbury Park Synagogue
Bury and Whitefield Jewish Primary School
Bury and Whitefield JPS Nursery
Bushey and Oxhey Girl Guiding
Bushey Gan Nursery
Bushey United Synagogue
Bushey United Synagogue Cheder
Calderwood Lodge Nursery
Calderwood Lodge Primary School
Cardiff Jsoc

Cardiff Reform Cheder
Cardiff Reform Synagogue
Cardiff United Cheder
Cardiff United Synagogue
Catford & Bromley United Synagogue
Catford & Bromley United Synagogue Cheder
Central Synagogue London
Chai Cancer Care
Clare Shalom Nursery
Clare Shalom School
Clare Tikva School
Club Kef
Cockfosters and N Southgate Synagogue
Community Security Trust (CST)
Coventry Beit Knesset
Cranbrook United Synagogue
Cumbria Mitzvah Day
Daniel Rosenberg Household
Diocese of Leeds
Durham University Jewish Society
Ealing United Synagogue
East London and Essex Liberal Synagogue
East London and Essex Liberal Synagogue Cheder
Eden Primary School
Edgware & Hendon Reform Synagogue Young Families
Edgware and Hendon Reform Synagogue
Edgware and Hendon Reform Synagogue - Orot Cheder
Edgware United Cheder
Edgware United Synagogue
Edinburgh Hebrew Congregation
Ellen Hobson Household
Erica Marks Household
Etz Chaim Jewish Primary School
Fans Supporting Foodbanks
Federation of Zionist Youth (FZY)
Finchley Federation
Finchley Progressive Cheder
Finchley Progressive Synagogue
Finchley Reform Synagogue Kindergarten
FMCB Chartered Accountants
Frankel Leo Street Synagogue
Freshfields Bruckhaus Deringer
Furness and South Lakes Youth Council
Gabby Wasserman Household
Galicia Jewish Museum
Gants Hill JACS
Geshur School
Gilah Nursery
Girlguiding Elstree & Borehamwood District
Golders Green Synagogue
Golders Green Synagogue Youth
Grange View C of E First School
Habonim Dror Glasgow
Habonim Dror Leeds
Habonim Dror Manchester
Habonim Dror Youth Movement
Hadley Wood Jewish Community
Hakorot Book Club
Ham & High
HaMakom Cheder
Hammerson House Hampstead
Hampstead Garden Suburb Cheder
Hampstead Garden Suburb Synagogue (Norrice Lea)
Hampstead Synagogue
Happy Orkids
Hasmonean High School for Girls
Hawkshead Mitzvah Day
Hendon United Synagogue
Hertsmere Jewish Primary School
Highgate Synagogue Youth
HMRC Stratford Jewish Network

Holocaust Memorial Day Trust
Holy Law South Broughton Congregation
Holy Trinity & St Silas Primary School
Ilford Federation Synagogue
Iron Aid Foundation
Jewish Action for Mental Health
Jewish Blind and Disabled Aztec House
Jewish Blind and Disabled Cecil Rosen Court
Jewish Blind and Disabled Cherry Tree Court
Jewish Blind and Disabled Fairacres
Jewish Blind and Disabled FDJ Court
Jewish Blind and Disabled Hilary Dennis Court
Jewish Blind and Disabled Milne Court
Jewish Care - Connect@Kenton
Jewish Care - Holocaust Survivors Community Centre
Jewish Care - Michael Sobell Jewish Community Centre
Jewish Care - MIKE
Jewish Care - Sam Beckman Day Centre
Jewish Care - The Dennis Centre
Jewish Care - Kun Mor & George Kiss House
Jewish Care - Rosetrees
Jewish Care - Sandringham Pears Court
Retirement Living
Jewish Care - Stella and Harry Friedman House
Jewish Care - The Betty and Asher Loftus Campus
Jewish Leadership Council
Jewish Reform Congregation Shirat ha-yam
Jewish Volunteering Network
Jewish West Midlands
JFS School
JLGB Mill Hill Juniors
JLGB Mill Hill Seniors
Jodie Findlay Household
Jonathan Drapkin Household
JW3 Trust Ltd
Kehila Beit Emunah Asturias
Kenilworth Primary School
Kenton United Synagogue
Kerem School
Kerem School Early Years Unit
KeshetUK
Kikar Kids
Kingston Liberal Synagogue
Kisharon
Kisharon Noé School (Primary)
Kisharon Noé School (Secondary)
Kol Chai Hatch End Jewish Community
Kol Nefesh Masorti Synagogue
Labour Friends of Israel
Lady Nafisa Secondary School for Girls
Langdon Brady (Edgware)
League of Jewish Women Northwest Region
Leeds 22nd Beavers
Leeds Faiths Forum
Leeds Jewish Housing Association
Leeds Jewish Representative Council
Light Up A Life
Lincolnshire Jewish Community
Liverpool Reform Synagogue Youth
Lord's Taverners
Loughton Synagogue
Loughton Synagogue Cheder
LSE Faith Centre
LSE Jewish Society
LSJS
Lyndhurst House Preparatory School
Maccabi GB
Maidenhead Synagogue
Maidenhead Synagogue Cheder
Manchester Reform Synagogue
March of the Living UK
Marys Meals
Menorah Synagogue

Thank You to all of our supporters

Menorah Synagogue Cheder
Mill Hill Cheder
Mill Hill East Jewish Community
Mill Hill Synagogue
Miriam Bachar Household
Moishe House London Hackney
Mosaic Jewish Primary School
Mosaic Liberal Synagogue Harrow
Mosaic Masorti Synagogue (formerly HEMS)
Mosaic Reform Synagogue
Nagila Pre-School
Natalia Kannagara Household
New Essex Masorti Synagogue
New North London Synagogue Cheder
New North London Synagogue NNLS
New West End Synagogue
New West End Synagogue Or Torah Chadash Cheder
Newcastle Reform Baby and Toddler Group
Newcastle Reform Cheder
Newcastle Reform Synagogue (Ner Tamid)
Newcastle United Hebrew Congregation
Nightingale Hammerson
Nisa Nashim - West Midlands
Nisa Nashim - Wessex
Nisa-Nashim - Head Office
North Cheshire Jewish Primary School
North Walney Primary School
North West London Jewish Day School
North West Surrey Cheder (Nitzanim)
North West Surrey Synagogue
Northwood United Synagogue
Norwood Blenheim Avenue
Norwood Blueberry Close
Norwood Cardinal Avenue
Norwood Carlton Avenue
Norwood Coppice Way
Norwood Edgeworth Close
Norwood Edgeworth Crescent
Norwood Employees
Norwood Fairholme Gardens
Norwood Hale Lane
Norwood Highview Gardens
Norwood Kennedy Leigh Family Centre
Norwood Lyonsdown Road
Norwood Oakfield Road
Norwood Old Church Lane 1
Norwood Old Church Lane 2
Norwood Ravenswood Village
Norwood Seymour Gardens
Norwood Southwood Gardens
Norwood Station Road Borehamwood
Norwood Station Road Hendon 1
Norwood Station Road Hendon 2
Norwood Woodcock Dell
Norwood Woodford Road
Nottingham JSOC
Nottingham Liberal Cheder
Nottingham Liberal Synagogue
OGR Stock Denton Solicitors
Ohr Yisrael Federation Synagogue
OJC (Oxford Jewish Community) Cheder
OJC (Oxford Jewish Congregation)
Oxford University Jewish Society
Paige Dolphin Household
Peter Juler Household
Peterborough Liberal Jewish Community
Phil Kelvin Household
Phillippa Hasenson Household
Pinner New Generation Group
Pinner United Synagogue
Pinner United Synagogue Youth
PJ Library
Project ImpACT

Radlett Reform Cheder
Radlett Reform Synagogue
Radlett United Synagogue
Radlett United Synagogue Cheder
René Cassin
Resource
Richmond United Cheder
Richmond United Synagogue
Rickman D Household
Rimon Jewish Primary School
Rosh Pinah Primary School
Rosh Pinah Primary School Nursery
RSY-Netzer
Sacks Morasha Jewish Primary School
Saffron Green Primary School
Sara Radivan Household
Sha'arei Tsedek Religion School
Sha'arei Tsedek, North London Reform Synagogue
Shenley Park Trust
Shenley United Jewish Community
Shir Hatzafon
Shofar Daycare Nursery
Sikh Sewa Organisation Manchester
Simon Marks Jewish Primary School
Sinai Cheder
Sinai Jewish Primary School
Sinai Synagogue
Sophie Kemp Household
South Hampstead Cheder
South Hampstead High School
South Hampstead Social Action Group
South Hampstead Synagogue
South Hampstead Youth
South Herts and Edgware Masorti Synagogue
South Manchester Synagogue - Cheder
South Manchester Synagogue (Bowden)
South West Essex & Settlement Reform Synagogue
Southport and District Reform Synagogue
Spanish & Portuguese Synagogue Holland Park
St Albans Masorti Synagogue (SAMS)
St Mary & St Archangel Michael Coptic Orthodox Church
St Paul's Church, Marylebone
St Teresa's Catholic Primary School
St. Albans Masorti Cheder
St. Albans Masorti Ladies
St. John's Wood Synagogue
St. John's Wood Synagogue - Kindergarten in the Wood
St. John's Wood Synagogue Cheder
St. Wilfrid's RC Primary School
Stanmore and Canons Park Cheder
Stanmore and Canons Park Synagogue
Stanmore and Canons Park Synagogue Mitzvah Mummies
Stevenage Liberal Synagogue (formerly North Herts)
Stowting CEP School
Sukkat Shalom Reform Synagogue
Telereal Trillium
The Ark (Northwood and Pinner Liberal Synagogue)
The Ark Cheder (NPLS)
The Bike Project
The Friends of Harrow Weald
The Friendship Circle
The Hale and District Hebrew Congregation
The Jewish Council of North Central Florida (JCNCf)
The Jewish Youth of Athens
The King David High School (Manchester)
The Leeds Judean Club For Boys and Girls T/A

The Zone
The Liberal Jewish Synagogue
The Liberal Jewish Synagogue Cheder - Rimon
The Liberal Jewish Synagogue Nursery
The Liberal Synagogue, Elstree
The Liberal Synagogue, Elstree Cheder
The Together Plan - London
The Village Shul Hampstead
The Village Shul Hampstead Cheder
The West London Synagogue
The West London Synagogue Cheder
Three Counties Liberal Jewish Community (TCLJC)
UJIA
UJS
Unitas
University of Bristol Jewish Society
University of Exeter Jewish Society
University of Florida Hillel
University of Glasgow Jewish Society
University of Leeds Jsoc
University of Warwick Jewish-Israeli Society
Watford and District Cheder
Watford and District Synagogue
Wessex Liberal Jewish Community
West Cumbria Youth Council Cumbria County Council
Westminster Synagogue
Westminster Synagogue Cheder (Or Shabbat)
Whitefield Hebrew Congregation
Wimbledon Synagogue Cheder
Winchester's Jewish Community and Friends
Wohl Ilford Jewish Primary School
Wohl Ilford JPS Nursery
Wolfson Hillel JPS Nursery
Wolfson Hillel Primary School (WHPS)
Woodside Park Cheder
Woodside Park Synagogue
Worcestershire Interfaith Forum
World Jewish Relief
Yavneh College
Yavneh Primary School
Yeshurun Federation Synagogue
Yeshurun Hebrew Congregation Gatley
York Liberal Jewish Community
Zoe Simmonds Household

International Participating Organisations

Comunidad Judia de Melilla
Comunidad Judia de Ceuta
Comunidad Judia de Alicante
Comunidad Judia de Girona
Athens Jewish Community
Comunidad Masorti Bet El
Comunidad Israelita de Barcelona
Comunidad Judia de Murcia
Comunidad Judia de Majorca
Comunidad Judia de Malaga
Comunidad Judia de Galicia
J-Teen Leadership/ UJA Fed of NY
Jersey Jewish Congregation
Jewish Community Centre of Krakow (JCC)
Jewish Community of Bermuda
Judaisme en Mouvement
Judaisme en Mouvement - Talmud Tora
Lauder Morasha Jewish School
Lauder Athens Jewish Community School
Magen Avot
MAZSIHISZ Federation of Jewish Communities in Hungary
Mitzvah Day Brasil

National Council of Jewish Women of Canada - Edmonton Section
National Council of Jewish Women of Canada, Toronto
National Council of Jewish Women of Winnipeg Neder
Temple Shir Shalom (Florida)
The Lubavitch-Chabad Jewish Student & Community Center (Florida)
Union of Jewish Women, Cape Town
Union of Jewish Women, Johannesburg
Windhoek Hebrew Congregation

Mitzvah Day International Partnerships

Lazos/Latin America

AVIV
Betel Mexico
Bnei Israel
Hacoaj
Hebraica Peru
Hebraica Venezuela
Hillel Cordoba
Hillel Uruguay
Isaac Rabin School
Kehila Bariloche
Lamroth Ha Kol
Lazos Argentina
Lazos Chile
Lazos Costa Rica
Lazos Panama
Lazos Rosario
Lazos - Head Office
Reshet
Roemmers
Tengo para donar

Maccabi Europe

Maccabi Belarus
Maccabi Belgium
Maccabi Croatia
Maccabi Deutschland e.V.
Maccabi Finland
Maccabi Germany
Maccabi Guatemala
Maccabi Holland
Maccabi Hungary
Maccabi Italy (Monferrato)
Maccabi Italy (Rome)
Maccabi Lithuania
Maccabi Malta
Maccabi Slovakia
Maccabi Spain
Maccabi Ukraine

Mitzvah Day Australia

Art Project
Australian Jewish Genealogical Society (Vic)
B'nai B'rith Hakiba Unit
B'nai B'rith Hatikvah Unit
B'nai B'rith NSW
B'nai B'rith Unit
Geshet-Rabin
BBYO Sydney
C Care
Canterbury Hebrew Congregation

Carmel School Parents' & Friends' Association Inc.
Emanuel Synagogue
Emmy Monash Aged Care
Family and Friends
Gen2Gen
Habonim Dror Perth
Impact
Individual Project
Jewish Care Victoria
Jewish Museum of Australia
KEDEM Community
Kehilat Nitzan Masorti Synagogue
Kehilat Nitzan
Maccabi WA
Magen David Adom
Mazon Australia and BBYO
Menora Foundation
Mount Scopus ELC
Mount Scopus Memorial College GBH
National Council of Jewish Women Australia WA Section
National Council of Jewish Women NCJWA Vic
North Shore Temple
Emanuel Rotary Club of Subiaco
Share the Dignity
Sholem Aleichem College
Socks 4 Support
Souper Kitchen
The Canasta Chicks
The Leo Baeck Centre for Progressive Judaism
Walking in memory of our past members
WIZO Masada
WIZO Victoria
ZOOZ Israeli Dancing

Mitzvah Day Germany

Jüdische Gemeinde Aachen
Rabbiner Brandt Verein
Israelitische Kultusgemeinde Baden-Baden K.d.ö.R.
IKG-Bamberg
Jüdische Gemeinde zu Berlin K.d.ö.R. - Jugendzentrum Olam
Fraenkelufer Synagogue
Jüdische Allgemeine
Heinz-Galinski-Schule
Makkabi Deutschland
Morasha Germany
Special Olympics Deutschland
Hillel Deutschland e.V.
Mitarbeiter des Zentralrat der Juden
Kita Sternenhügel
Jüdische Gemeinde Bochum-Herne-Hattingen
Jugendzentrum ATID Bremen
Senioren-Club der Jüdischen Gemeinden im Lande Bremen
Juze GIBORIM Darmstadt
Etz Chaim und die Beyerim
Jüdische Kultusgemeinde Dortmund
Jugendzentrum Tikwatejnu
SABRA
Yitzhak-Rabin-Schule
Jugendzentrum Mishpacha Emmendingen
Jüdische Landesgemeinde Thüringen
JKG Essen
Jüdische Liberale Gemeinde Region Kassel e.V. Emet weSchalom
Jüdische Gemeinde Frankfurt am Main K.d.ö.R.
KITa Bereschit
Kindergarten im Ignatz Bubis-Gemeindzentrum
I. E. Lichtigfeld-Schule / Gymnasium
I.E. Lichtigfeld-Schule / Grundschule

Thank You

to all of our supporters

Jüdisches Altenzentrum Frankfurt
 Kita Die Arche Noah, Frankfurt/M.
 Jeschurun-Religionsschule Frankfurt am Main
 EJCGF (Egalitäre Jüdische Chawurah Gescher Freiburg)
 Jugendzentrum Chesed
 Jugendzentrum Chasak
 Jugendzentrum Chai Hannover
 Chabad Lubawitsch Niedersachsen e.V
 Jugendzentrum Simcha Heidelberg
 School Project
 Synagogen-Gemeinde Köln
 JLKG Gescher LaMassoret
 Synagogengemeinde Konstanz
 JGK Krefeld
 Jüdische Gemeinde Leipzig
 IRG Leipzig JuZe Leipziger Chaverim
 Hillel Deutschland e.V.
 Jugendzentrum OR
 Jugendzentrum Or Chadasch Mannheim
 Jüdische Gemeinde Mönchengladbach
 Freundeskreis
 Liberale Jüdische Gemeinde Beth Shalom
 Jugendzentrum Hativa
 Liberale Jüdische Gemeinde Ruhrgebiet Perusch e. V.
 Jugendzentrum Lev Echad
 Jugenzentrum Sahav Pforzheim
 Universität Potsdam Historisches Institut
 Fachstelle Antisemitismus Brandenburg mit der
 Fachstelle Islam et al.
 Jüdische Kultusgemeinde Kreis Recklinghausen
 Jüdische Gemeinde Rostock
 Israelitische Kultusgemeinde Rottweil/Villingen-
 Schwenningen
 Jugendzentrum
 Elef Drachim
 Jüdische Gemeinde, haKochav für den Kreis Unna K.d.ö.R.
 Jugendzentrum OZ Wiesbaden

Mitzvah Day Switzerland

Zürich: JLG Or Chadasch (Jüdische Liberale
 Gemeinde in Zürich)
 Basel: Migwan (Liberal Jewish Congregation in Basel)
 Geneva: GIL Communauté Juive Libérale de Genève

Mensch/ South Africa

Angel Network
 Astra Public
 Creative Stance Studio
 CTTH
 E-Pap
 Jedi Tedi
 Liv Curios - Friendship Circle Learning in Reach
 Moishe House Cape Town
 Ripples for Change
 The Sinai Academy
 Mama Flo
 Union of Jewish Women

Key Partner Charities

2econd Chance CIC
 4Louis
 ADI (formerly Aleh)
 All Aboard Shops
 Camp Simcha
 Childs Hill Food Bank
 Comfort Cases UK
 DKMS
 Feast With Us
 Food Bank Aid
 GIFT
 Give. Help. Share.
 Goods for Good
 Gratitude
 Help & Hope the Homeless Herts & London
 Jami
 Jewish Care
 Jewish Women's Aid
 JLiving
 Keats Community Library
 Langdon - New Chapters
 Leket Israel
 Little Village
 LJS Drop-in for Asylum Seeker Families
 London Wildlife Trust (Walthamstow)
 Norwood Head Office
 Reach Out Hertfordshire
 Resuscitation Council UK
 Save a Child's Heart
 Screen Share UK
 Sebby's Corner
 Smalls for All
 St John's Hospice
 Sufra NW London
 The Children's Book Project
 The Joely Bear Appeal
 The Pachamama Project CIC
 The Passage
 The Separated Child Foundation
 The Together Plan - London
 Watford and Three Rivers Refugee Partnership
 White Rose

