

Mitzvah Day

Annual Report 2021



Message from our Chief Executive

For Mitzvah Day 2021 we knew that there remained many unknowns; we were unsure if we would be able to go ahead ‘as usual’. But one thing was clear: that our focus needed to be on safely bringing people back together, however we could. Being isolated highlighted our deep need for connection and the importance of community, family, and friendship.

We knew, that Mitzvah Day 2021 would have to be flexible, prepared for the unexpected and respectful of guidelines, differing comfort levels and vulnerabilities. Following conversations with our charity partners we decided to retain some Mitzvah Day project models from the height of Covid, including videos and cards for residents in care homes, virtual resources for Zoom Mitzvah Day projects and as always, our team offering tailored support, acknowledging that each group and project has its own unique fabric and challenges.

As we approached the summer months and headed towards autumn, families and close friends had begun to reconnect and care homes were welcoming relatives with moving reunions. We also knew that many were sticking close to their immediate circles and keeping their interactions limited, maintaining safety measures and that for some of our partners and communities, restrictions were remaining in place.

While we remained apart to protect one another, the resounding message and desire has been to come back together - this is what Mitzvah Day 2021 allowed us to joyfully do, making a real difference in our local communities.

This provided a boost of positivity that Mitzvah Day has become renowned for and remains much needed. The excitement and energy for Mitzvah Day 2021 was palpable and seeing Mitzvah Day back in action, painting the town green, as people from all faiths and backgrounds reconnected, was heart-warming.

It is our deeply held belief that our neighbourhoods are stronger, our communities more cohesive and less divided, and our friendships and worlds more open and diverse when we connect with people from different backgrounds and faiths. Sharing our values and connecting around what we have in common, only serves to reduce stigma, hatred, and prejudice.

May we all have a happy and healthy year ahead.

Georgina Bye
Chief Executive



Mitzvah Day volunteers joined the London Wildlife Trust to undertake practical conservation tasks at Walthamstow Wetlands

What is Mitzvah Day?

Mitzvah Day brings people, of all faiths and none, together through Jewish-led social action. Based upon the Jewish values of *gemilut chasadim* (acts of kindness), *tzedek* (justice) and *tikkun olam* (repairing the world), it is the largest multi-faith day of social action in the UK and is a key calendar event in Jewish communities in over 30 countries.

Mitzvah Day brings thousands of people together, to give our most valuable possession: our time. We strive to make a positive difference to the communities around us on Mitzvah Day and throughout the year by encouraging and celebrating volunteering and building relationships with people we may not usually meet to build a stronger civil society.

On Mitzvah Day, communities and individuals are empowered to engage in a wide variety of social action projects, including visiting older or lonely people; collecting clothing to donate to refugees; replenishing food bank stores; cooking for homeless people and taking part in environmental projects. All these projects facilitate genuine connections between communities, individuals and the charities they support, using social action as the way to connect.



South Manchester Synagogue Interfaith Tea Party



Sir Keir Starmer on a litter picking adventure!



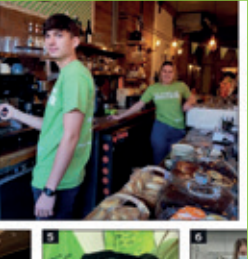
Mitzvah Day gets Starmer's vote



Mitzvah Day



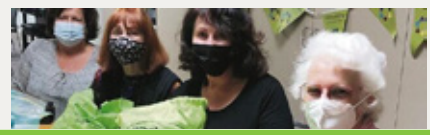
Mitzvah day 2021



Mitzvah Day in the Media

Mitzvahs making a real difference

As part of Mitzvah Day, volunteers prepared meals for the needy and gift bags and hampers for vulnerable members of the wider community and victims of domestic abuse.



Communities connect with one another as Mitzvah Day marked in Barnet

By Mark... @... #MitzvahDay

A good day in deed!

A good day in deed! Mitzvah Day 2021... #MitzvahDay



INTERFAITH MITZVAH DAY HELPS SUPPORT VICTIMS

Members of faith communities in Bradford and Leeds... #MitzvahDay

Pupils support asylum seekers for Mitzvah Day action

Children in Redbridge have collected toiletries for asylum seekers as part of an international day of social action. Pupils from two Jewish primary schools joined Mitzvah Day, a faith based social action event, to help their local community. Woodford Jewish Primary School (WJPS) pupils supported an asylum seeker drop-in centre run by Woodford Forest United Synagogue. The children also collected toys for Camp Simcha - a charity that supports seriously ill children - and made cards, pictures, drawings and bunting to bring cheer to residents at Jewish Care's VI and John Rubens House, which it says is the only Jewish care home in Redbridge. Along with Barkingside's Clare Tikva School pupils, the Clare Tikva school pupils, the children spent Friday, November 19 collecting and baking to help others. "Initiatives like Mitzvah Day



Woodford Jewish Primary School collected donations for Woodford Forest United Synagogue asylum seeker drop-in and charity Camp Simcha. Pictures: SAKEH ZEIN

shows how much we, and the children especially, want to help those who don't have what we have. They have a drive to make our world a better place." At East London and Essex Liberal Synagogue, community members made welcome cards for refugee children. Many families brought in clothes and other items needed. Other members helped prepare an interfaith soup kitchen in Woodham Forest with Rabbi Richard Jacobs. He said: "Life is made more joyful when we offer mitzvot to each other."



Action Packed Mitzvah Day for Project Impact Volunteers!

Mitzvah Day was bustling for 130 Impact volunteers from across the community who got busy in a range of social volunteering initiatives. A second number of items gathered from across 18 schools to wrap bundles of gifts for seriously ill children at Project Impact's 'Wrap-a-Thon' in support of Cancer Command. Woodford Jewish Primary School and South's Ark. Volunteers on the day that Impact programme visited the Association of Jewish Refugees where they engaged with members virtually and made 100 personalised care packages. An inspiring group of Impact youth also volunteered and taught English to local youngsters and wrote a new powerful musical of Impact in Israel in partnership with OREF. Project Impact facilities a range of social volunteering activities.

'Community spirit' seen across north London during Mitzvah Day 2021

Images of faith and community members working together to support the Mitzvah Day 2021. Mitzvah Day 2021 was a day of social action across north London. Community members from across the region came together to support the Mitzvah Day 2021. The day was a day of social action across north London. Community members from across the region came together to support the Mitzvah Day 2021. The day was a day of social action across north London. Community members from across the region came together to support the Mitzvah Day 2021.



Faiths join up for Mitzvah Day

Members of faith communities in Bradford and Leeds... #MitzvahDay



Business praised after offering...



More mitzvahs planned as volunteers return

RY TOBERMAN

MITZVAH DAY leaders are anticipating more traditional schedule annual day of social action, and a fortnight away.

"The programme was significantly curtailed by the pandemic, but we had the month of mitzvah-keep things alive", recalled Day founder and chair Laura Marks.

"We could bring small groups together, but people didn't feel comfortable. There were relatively few interviews, and a key Mitzvah Day plan for 2021 will see some activities included, such as going into care for the elderly. Ms Marks is encouraging participation returning to the UK projects – and a further 100 in other countries, with



economic level, is potentially quite profound."

There was also the need "to find projects which have long-term relationships. We've always said that it's essential, being on a rota to support a local food bank was a year-round commitment."

Mitzvah Day was additionally broadening its remit, working with "groups we don't normally do things with".

Around a quarter of this year's projects will be interfaith, which Ms Marks viewed as especially significant given the strain the Gaza conflict had placed on Jewish-Muslim relations.

"We might not agree on politics but we can agree on supporting refugees. That's the beauty of it."

Ms Marks added that the interfaith something in the way we have living, involving us stepping out of our comfort zone.

"People might not be ritual or prayer but they are social action."

"And we have found 100 ways of doing things."

<https://mitzvahday.org.uk>

Bradford bishop hails 'wonderful' collaboration between



BRADFORD COMMUNITY members in Bradford and Leeds joined forces on a Mitzvah Day to support the local Muslim and Jewish communities. The collaboration, after the Bradford bishop, was led by the Diocese of Leeds and Leeds Synagogue. The Bradford bishop, the Rt Revd Dr Paul Hirst, said: "It was wonderful to see the Bradford Jewish community and the Bradford Muslim community working together to support the local community. This is a wonderful example of what we can achieve when we work together."

He added: "The Bradford Jewish community and the Bradford Muslim community have been working together for many years. This is a wonderful example of what we can achieve when we work together."

The Bradford bishop, the Rt Revd Dr Paul Hirst, said: "It was wonderful to see the Bradford Jewish community and the Bradford Muslim community working together to support the local community. This is a wonderful example of what we can achieve when we work together."

Combine for social action



Faiths Forum for London (FFL) and the Jewish community have joined forces to support the local Muslim and Jewish communities. The collaboration was led by the FFL and the Jewish community. The FFL, which is a multi-faith organisation, said: "This is a wonderful example of what we can achieve when we work together."

The FFL, which is a multi-faith organisation, said: "This is a wonderful example of what we can achieve when we work together."

25,000 volunteers perform good deeds on Mitzvah Day



BY DAVID SPINER

COMMUNITARIANISM AND COMMUNITY spirit were on display as 25,000 volunteers across the UK and Europe gathered for Mitzvah Day on Saturday.

The 25,000 volunteers across the UK and Europe gathered for Mitzvah Day on Saturday. The volunteers performed good deeds in their local communities, including visiting care homes, donating to food banks, and participating in environmental projects.

The volunteers performed good deeds in their local communities, including visiting care homes, donating to food banks, and participating in environmental projects.

Ham&High team out for Mitzvah Day



Ham&High editor André Langlois discussed the changing media landscape with living residents.

'Uplifting, joyful and utterly worthwhile': Ham&High team out for Mitzvah Day



THE HAM&HIGH team met residents in Golders Green sheltered housing to discuss local issues important to them.

On Thursday (November 11) reporters and editor André Langlois joined tenants at Lionel Leighton Court ahead of Mitzvah Day – the UK's largest faith-led day of social action, taking place internationally on November 21.

Living, a housing association working primarily with the Jewish community, provided cake and sandwiches for guests to enjoy, including Mitzvah Day founder Laura Marks.

Marks praised staff at the sheltered housing for welcoming visitors so warmly and asked residents for their feedback.

their local paper. Key issues included the frequency of roadworks in the area and uneven pavements causing accidents and falls.

Attendees discussed Richard Ratcliffe's hunger strike outside Whitehall, protesting his wife Nazanin Zaghari-Ratcliffe's illegal imprisonment in Iran.

Disability access campaigner Matthew Kaye, who has had cerebral palsy since birth, is a Living tenant and Mitzvah Day veteran.

Laura said: "An added bonus was seeing Matthew, who has been so ill, come along with his infectious smile to join in the fun."

Living communications officer Dawn Slagel, who helped organise the day, said: "You could



Free trips on Mitzvah Day

Free trips on Mitzvah Day. The Ham&High team is offering free trips to various locations during the Mitzvah Day period.

Free trips on Mitzvah Day

Free trips on Mitzvah Day. The Ham&High team is offering free trips to various locations during the Mitzvah Day period.

Free trips on Mitzvah Day

Free trips on Mitzvah Day. The Ham&High team is offering free trips to various locations during the Mitzvah Day period.

What they said

“

It is always a pleasure to participate in Mitzvah Day and support the incredible work they do. Mitzvah Day is special for many reasons. I'm always struck by how it brings people of different faiths and communities together to help others.”

Sir Keir Starmer
Leader of the Opposition

“

The small acts of kindness we see on Mitzvah Day add up to make a big difference in our communities. Mitzvah Day is another example of the profoundly positive contribution London's Jewish community makes to our city.”

Sadiq Khan
Mayor of London

“

Mitzvah Day shows what takes place when we dare to imagine a human society where flourishing is at its heart and we dare to support our fellow human beings. Together we make something beautiful.”

The Rt Revd Rob Wickham
Bishop of Edmonton

“

Our faith and belief communities achieve great things when they work and act together and Mitzvah Day is a perfect example of that. By donating time rather than money, those taking part make a difference to the projects they support whilst also building and strengthening relationships with their friends and neighbours from different backgrounds.”

Nicola Sturgeon
Scotland's First Minister

“

The volunteering of time and making donations on Mitzvah Day makes a real difference to those in need of help in our neighbourhoods; this generosity and community spirit shown by volunteers from across communities is truly remarkable.”

Imam Qari Asim MBE
Chair of the Mosques and Imams National Advisory Board

“

Mitzvah Day provides a special opportunity to give selflessly to others. It shows the very best of our Judaism in action – as we unite with those of all faiths and none to do something for those who need it most.”

Chief Rabbi Ephraim Mirvis
Chief Rabbi of the United Hebrew Congregations of the Commonwealth

“

Mitzvah Day is always a highlight of the year for our Jewish communities – a day where we come together with each other, and our friends of other faiths, to do good for the world around us.”

Rabbi Charley Baginsky
Liberal Judaism CEO



10 DOWNING STREET
LONDON SW1A 2AA

THE PRIME MINISTER

Mitzvah Day is a wonderful tradition that I am once again proud to be able to support.

I am filled with so much pride to see the thousands of volunteers who every year donate their time to do something positive for their communities. It is inspiring to see that despite the reduced events last year, due to COVID restrictions, volunteers have returned in full force and have found COVID safe ways of working together.

Mitzvah Day encourages people from all faiths and backgrounds to come together to bring about social action, and this Jewish-led day is an excellent example of the generosity and good spirit of the British public.

I would like to thank you for all of your hard work and I wish you a very happy and successful Mitzvah Day.

19 November 2021

Tackling Intolerance Through Love & Social Action

Despite the challenges of 2021 and the continuation of living through a global pandemic, what became clear to me was that we care deeply for our neighbours, and they care deeply for their Jewish friends.

Alongside attacks on the Jewish community this year, from the graffiti in Belsize Square, campus attacks, the convoy of cars shouting abuse through North West London, the Chanukah bus, and other incidents around the world, were renewed and refreshed messages of support, strength and solidarity. These came from faith and national leaders, local councillors, colleagues and most importantly, our neighbours.

It would be so easy to keep to ourselves, to make ourselves smaller and less visible, but that has never been the way of the Jewish people. We refuse to cower and disappear from society. We know that we have so much to share and to give to the world around us and despite troubled times, we continue to demonstrate our Jewish values, *Ve'ahavta Lereacha Kamocho*, loving our neighbour as ourselves.

What this year has demonstrated to me is that we need to continue building relationships across perceived divides through giving back, acts of social action, together. This is at the core of Mitzvah Day, and I am endlessly blown away by the tens of thousands of people who volunteer, coordinate and fund the work. We stand tall and strong speaking

out together against prejudice which can lead to hatred. "Hate", said Dr Martin Luther King, "cannot drive out hate; only love can do that". I believe we must continue to meet, befriend and yes, love one another, and put this into action through daily, monthly or annual acts of kindness. At Mitzvah Day, hand-in-hand with our neighbours, we know our willingness to do 'mitzvahs' (good deeds), will bring joy, friendships, and improved neighbourhoods, as it unites us.

Laura Marks OBE
Founder and Chair



Clore Tikva Primary School bake for the homeless in Ilford

Mitzvah Day International

With Covid-19 rates and vaccination programmes operating differently all over the world, we continued to work with our international partners with Mitzvah Day's unique approach.

This year, it was important to understand that restrictions and comfort levels varied around the world. Not all our partners could conduct their Mitzvah Day projects in the same way as they might have done pre-pandemic.

Despite this we were able to maintain our work in 30 countries, continuing our strategic partnerships with the Commonwealth Jewish Council, Maccabi Europe, Lazos across Latin America and our satellite hubs in Australia, Brazil, Germany and South Africa.

Spotlight on Mitzvah Day International

The National Council of Jewish Women of Winnipeg took their Mitzvah Day programme to new heights. This year 29 Jewish, professional, and interfaith organisations joined them in hands-on, social action initiatives. They were thrilled to welcome Catholic, United and Mennonite churches and groups from the local Yazidi organisation.

Previous Mitzvah Day projects had involved friendly visits to isolated seniors and collections and distribution of warm socks and winter jackets to individuals from marginalised communities.



Odessa Animal Welfare Project



UJW Johannesburg collection project



National Council, Winnipeg



Mitzvah Day Germany

For 2021 they repeated these projects with a particular focus on connecting with smaller social service organisations that work directly with at-risk people and supporting grassroots organisations.

Projects included collecting books and toys for the indigenous women's healing centre, donations of dental

hygiene products and a clean-up at a women's shelter, collecting hygiene products, making cards for care home residents, sandwiches and home-baked cookies to be donated, writing thank you letters to front-line workers and so much more.

Mitzvah Day Interfaith

Reuniting and reinvigorating community partnerships

We were delighted to be able to reconnect with people and communities from all faiths and backgrounds, many of whom had not been able to come together due to Coronavirus. Not only were we able to re-establish old connections but we were able to create and facilitate new ones including an exciting relationship with the Coptic Church which we look forward to building upon and developing further. Bringing together communities and groups that are on one another’s doorsteps but not yet working in tandem is one of our favourite things about Mitzvah Day!



OGR Stock Denton collected toiletries for child refugees via The Separated Child Foundation



Lady Nafisa (Muslim) School students helping out in the local community allotments



Alyth Synagogue and St Mary & Archangel Michael Coptic Orthodox Church food bank collection



Interfaith litter pick and launch of the Children’s Climate Emergency run by food poverty charity Gratitude

Spotlight on Interfaith: Social Action in 2021

Coptic Church and Alyth Synagogue

Following a positive meeting between Laura Marks OBE and the Coptic Church Archbishop Angaelos, we began to explore communities to connect them with.

We were directed to St Mary & Archangel Michael Coptic Orthodox Church which, being in the Temple Fortune area, we knew could link up with a Jewish community close by.

We knew that Alyth Synagogue was participating in the Movement for Reform Judaism's food bank collection competition. We also knew that St Mary & Archangel Michael Coptic Church had a regular cooking programme for rough sleepers. With this knowledge we brought them together as Alyth donated items collected to be used in the

churches cooking initiative. In 2022 we will be looking for more communities to bring together using this model.

Our thanks to Rabbi Josh Levy, Rabbi Elliot Kardstat and Father Mina for facilitating this new relationship and we look forward to seeing it blossom.

Leeds and Bradford Multi-Faith Mitzvah Day Initiative

The Leeds Jewish Representative Council together with the Anglican Diocese of Leeds created a powerful multi-faith initiative this Mitzvah Day in support of two women's shelters Staying Put and Leeds Women's Aid.

Organised by Christians, Jews and Muslims, supported by Hindus, Sikhs and people of no faith, community-wide collections of items requested by the shelters were held across Leeds and Bradford communities in the week leading up to Mitzvah Day with a sorting and packing day on Mitzvah Day itself ready to be distributed to the two refuges. This project brought together BEAP (Bangladeshi Community in Bradford), Wellsprings Together, The Diocese of Leeds and the Leeds Jewish Community in collecting hygiene items, stationery packs, toys, school bags and coats, prayer mats and holy books, new underwear for

women and children, non-perishable food items, pots and pans, kettles and toasters, scooters and bicycles and much more.

They were joined by Humayun Islam, Chief Executive Officer at BEAP Community Partnership, Bishop of Bradford Toby Howarth, Reverend Jenny Ramsden, Jewish MP Alex

Sobel and Simon Phillips, Director of Interfaith for the Leeds Jewish Representative Council.

Bishop Toby said, *"Today has been a wonderful example of how our diverse faith communities in Bradford and Leeds work so well together to meet the needs of vulnerable people in our communities"*.



Alex Sobel MP, Humayun Islam, Reverend Jenny Ramsden, Bishop Toby Howarth and Simon Phillips at Bradford Mitzvah Day

Thank You to our Mitzvah Day Supporters

Major Donors

- Bianca and Stuart Roden
- Bloom Foundation
- Charles Wolfson Charitable Trust
- Clore Duffield Foundation
- Davis Foundation
- Graham & Georgie Edwards
- Pears Foundation
- Peter Oppenheimer
- Rachel Charitable Trust
- Sara and Paul Philips
- Shoresh Trust

Mitzvah Day Friends

- ABG Group
- Alexandra Marks
- Anita and Jeffery Walker
- Benson Black
- Bianca and Gary Sakol
- Camden Giving
- Carolyn and Mark Mishon
- Debra Morris
- Denise and David Joseph
- Edwin and Esther Shuker
- Gabrielle and Mark Adlestone
- Gloria and Raymond Freeda
- Hilda Worth
- Jeremy Franks
- Joy & Malcolm Lyons Foundation
- Judy and Paul Dewinter
- Jusaca Charitable Trust
- Laura Marks and Dan Patterson
- Lee Sidney
- Loftus Foundation
- Lord Howard and Lady Jennifer Leigh
- Lord Jon and Lady Nicola Mendelsohn
- Michael Harris
- Michael Lewis
- Nimrod Capital LLP
- Roberta Benscher
- Ruth and Jeremy Smilg
- Shirley and John Marks
- Sir Trevor Chinn
- Sir Victor and Lady Sylvia Blank

- Stanley Cohen Foundation
- Suzi Freeda
- The Bergman Lehane Trust
- The Card Factory Foundation
- The John Freeman Charitable Trust
- The Manson Family Charitable Trust
- Wendy and Paul Filer
- UJIA
- and other anonymous donors.

With Special Thanks

Pears Foundation, for its indefatigable partnership, guidance and support.

Graphical, for the years of inspired designs that have brought the Mitzvah Day brand to life.

A special thank you goes to all our charity partners, with whom we work so closely, to create sustainable Mitzvah Day projects supporting the essential work they do.

The Mitzvah Day Trustees for their unwavering support and commitment to ensuring our stability and sustainability.



Whitefield Hebrew Congregation Food Collection



The Liberal Synagogue Elstree made bird feeders and planted a tree to improve their environment



Ark Synagogue's KT class collected Judaica to support families in Belarus and wrote letters in Cyrillic script

Kol Hakavod to our Mitzvah Day Partners

UK Participating Organisations

13th Altrincham Brownies
 17th Bushey Brownies
 20th Finchley (Woodside Park) Beavers
 20th Finchley (Woodside Park) Cubs
 20th Finchley (Woodside Park) Scout Troop
 3rd Edgware Brownies
 4th Borehamwood Guide & Ranger Guide Joint Unit
 5th Gatley Brownies
 6th Edgware Brownies
 7 Hills Sheffield & District Reform Jewish Congregation
 Adat Yeshua Messianic Synagogue
 Ahavat Yisrael
 Akiva Primary School
 Alei Zion
 Alma Primary
 Alonim Kindergarten (Sha'arei Tsedek Synagogue)
 Alyth Kindergarten
 Alyth NWRS
 Al-Zahra School
 Apples And Honey Nightingale Nursery
 Apples and Honey Wimbledon
 Barnet Multi Faith Forum
 BAT (Bnei Akiva Tribe)
 BBYO UKI
 Bedfordshire Progressive Synagogue (Rodef Shalom)
 Beit Klal Yisrael (BKY Liberal Community)
 Beit Shvidler Nursery
 Beit Shvidler Primary School
 Belmont United Synagogue
 Belsize Square Synagogue
 Belsize Square Synagogue Cheder
 Belsize Square Synagogue Youth
 Beth Shalom Reform Synagogue
 Beth Shalom Reform Synagogue Cheder
 Bhaktivedanta Manor Primary School
 Birmingham Progressive Synagogue
 Bnei Akiva
 Board of Deputies of British Jews
 Borehamwood and Elstree Synagogue
 Borehamwood Islamic Society Religion School
 Bournemouth Hebrew Congregation
 Bournemouth Reform Synagogue
 Bournemouth Reform Synagogue Cheder
 Bowdon Community Cares
 Brighton and Hove Progressive Synagogue
 Brighton and Hove Reform Synagogue Cheder
 Brighton and Hove Reform Synagogue Cheder
 Brodetsky Primary School
 Bromley Reform Synagogue
 Bromley Reform Synagogue Cheder
 Bromsgrove School
 Brondesbury Park Synagogue
 Brondesbury Park Synagogue Cheder
 Bury and Whitefield Jewish Primary School
 Bury and Whitefield JPS Nursery
 Bushey and Oxhey Girl Guiding
 Bushey Gan Nursery
 Bushey United Synagogue
 Bushey United Synagogue Cheder
 Calderwood Lodge Nursery
 Calderwood Lodge Primary School
 Cardiff Jsoc
 Cardiff Reform Synagogue
 Cardiff Reform Synagogue Cheder
 Cardiff United Synagogue
 Cardiff United Synagogue Cheder
 Catford & Bromley United Synagogue
 Catford & Bromley United Synagogue Cheder
 Central Synagogue London
 Chai Cancer Care
 Clore Shalom Nursery
 Clore Shalom School
 Clore Tikva School
 Club Kef
 Cockfosters and N Southgate Synagogue
 Community Security Trust (CST)
 Coventry Beit Knesset
 Cranbrook United Synagogue
 Cumbria Mitzvah Day
 Diocese of Leeds
 Durham University Jewish Society
 Ealing United Synagogue
 East London and Essex Liberal Synagogue
 East London and Essex Liberal Synagogue Cheder
 Eden Primary School
 Edgware & Hendon Reform Synagogue
 Young Families
 Edgware and Hendon Reform Synagogue
 Edgware and Hendon Reform Synagogue – Orot Cheder
 Edgware Masorti Synagogue
 Edgware United Synagogue
 Edgware United Synagogue Cheder
 Edinbrough Hebrew Congregation
 Etz Chaim Jewish Primary School
 Excel Nurseries
 Federation of Zionist Youth (FZY)
 Finchley Federation
 Finchley Progressive Synagogue
 Finchley Progressive Synagogue Cheder
 Finchley Reform Synagogue
 Kindergarten
 FMCB Chartered Accountants
 Freshfields Bruckhaus Deringer
 Furness and South Lakes Youth Council
 Gants Hill JACS
 Gesher School
 Gilah Nursery
 Girlguiding Elstree & Borehamwood District
 Golders Green Synagogue
 Golders Green Synagogue Youth
 Grange View C of E First School
 Habonim Dror Glasgow
 Habonim Dror Leeds
 Habonim Dror London
 Habonim Dror Manchester
 Hadley Wood Jewish Community
 Hakorot Book Club
 Ham & High
 HaMakom Cheder
 Hammerson House Hampstead
 Hampstead Garden Suburb Synagogue (Norrice Lea)
 Hampstead Garden Suburb Synagogue Cheder
 Hampstead Synagogue
 Hasmonean High School for Girls
 Hendon United Synagogue
 Hertsmere Jewish Primary School
 Highgate Synagogue Youth
 HMRC Stratford Jewish Network
 Holocaust Memorial Day Trust
 Holy Law South Broughton Congregation
 Holy Trinity & St Silas Primary School
 Ilford Federation Synagogue
 Iron Aid Foundation
 Jewish Action for Mental Health
 Jewish Blind & Disabled Milne Court
 Jewish Blind and Disabled Aztec House
 Jewish Blind and Disabled Cecil Rosen Court
 Jewish Blind and Disabled Cherry Tree Court
 Jewish Blind and Disabled Fairacres
 Jewish Blind and Disabled FDJ Court
 Jewish Blind and Disabled Hilary Dennis Court

Kol Hakavod to our Mitzvah Day Partners

Jewish Care – connect@kenton
 Jewish Care – Holocaust Survivors
 Community Centre
 Jewish Care – Michael Sobell Jewish
 Community Center
 Jewish Care – MIKE
 Jewish Care – Sam Beckman Day Centre
 Jewish Care – The Dennis Centre
 Jewish Care Kun Mor & George Kiss
 House
 Jewish Care Lady Sarah Cohen House
 Jewish Care Rosetrees
 Jewish Care Sandringham Pears Court
 Retirement Living
 Jewish Care The Betty and Asher Loftus
 Campus
 Jewish Volunteering Network
 Jewish West Midlands
 JFS School
 JLGB Mill Hill Juniors
 JLGB Mill Hill Seniors
 JW3 Trust Ltd
 Kenilworth Primary School
 Kenton United Synagogue
 Kerem School
 Kerem School Early Years Unit
 KeshetUK
 Kikar Kids
 Kingston Liberal Synagogue
 Kisharon
 Kisharon Noé School (Primary)
 Kisharon Noé School (Secondary)
 Kol Chai Hatch End Jewish Community
 Kol Nefesh Masorti Synagogue
 Labour Friends of Israel
 Lady Nafisa Secondary School for Girls
 Langdon Brady (Edgware)
 League of Jewish Women Northwest
 Region
 Leeds 22nd Beavers
 Leeds Faiths Forum
 Leeds Jewish Housing Association
 Leeds Jewish Representative Council
 Lincolnshire Jewish Community
 Liverpool Reform Synagogue Youth
 Loughton Synagogue
 Loughton Synagogue Cheder
 LSE Faith Centre
 LSE Jewish Society
 LSJS
 Lyndhurst House Preparatory School
 Maccabi GB
 Magen Avot
 Maidenhead Synagogue
 Maidenhead Synagogue Cheder

Manchester Reform Synagogue
 Manchester Reform Synagogue
 March of the Living UK
 Menorah Synagogue
 Menorah Synagogue Chedar
 Mill Hill East Jewish Community
 Mill Hill Synagogue
 Mill Hill Synagogue Cheder
 Moishe House London Hackney
 Mosaic Jewish Primary School
 Mosaic Liberal Synagogue
 Mosaic Masorti Synagogue (formerly
 HEMS)
 Mosaic Reform Synagogue
 Nagila Pre-School
 New Essex Masorti Synagogue
 New North London Synagogue Cheder
 New North London Synagogue NNLS
 New West End Synagogue
 New West End Synagogue Or Torah
 Chadash Cheder
 Newcastle Reform Baby and Toddler
 Group
 Newcastle Reform Synagogue (Ner
 Tamid)
 Newcastle Reform Synagogue Cheder
 Newcastle United Hebrew Congregation
 Nightingale Hammerson
 Nisa Nashim – West Midlands
 Nisa Nashim Wessex
 Nisa-Nashim Head Office
 North Cheshire Jewish Primary School
 North Walney Primary School
 North West London Jewish Day School
 North West Surrey Synagogue
 North West Surrey Synagogue Cheder
 Northwood United Synagogue
 Norwood Independent Living
 Norwood Kennedy Leigh Family Centre
 Nottingham JSOC
 Nottingham Liberal Synagogue
 Nottingham Liberal Synagogue Cheder
 OGR Stock Denton Solicitors
 Ohr Yisrael Federation Synagogue
 OJC (Oxford Jewish Community) Cheder
 OJC (Oxford Jewish Congregation)
 Oxford University Jewish Society
 Peterborough Liberal Jewish Community
 Pinner New Generation Group
 Pinner United Synagogue
 Pinner United Synagogue Youth
 PJ Library
 Project ImpACT
 Radlett Reform Synagogue
 Radlett Reform Synagogue Cheder

Radlett United Synagogue
 Radlett United Synagogue Cheder
 Resource
 Richmond United Synagogue
 Richmond United Synagogue Cheder
 Rimon Jewish Primary School
 Rosh Pinah Primary School
 Rosh Pinah Primary School Nursery
 RSY-Netzer
 Sacks Morasha Jewish Primary School
 Saffron Green Primary School
 Sha'arei Tsedek Synagogue Religion
 School
 Sha'arei Tsedek, North London Reform
 Synagogue
 Shenley Park Trust
 Shenley United Jewish Community
 Shofar Daycare Nursery
 Sikh Sewa Organisation Manchester
 Simon Marks Jewish Primary School
 Sinai Jewish Primary School
 Sinai Synagogue
 Sinai Synagogue Cheder
 South Hampstead High School
 South Hampstead Social Action Group
 South Hampstead Synagogue
 South Hampstead Synagogue Cheder
 South Hampstead Youth
 South Manchester Synagogue – Chedar
 South Manchester Synagogue (Bowden)
 South West Essex & Settlement Reform
 Synagogue
 Southport and District Reform
 Synagogue
 Spanish & Portuguese Synagogue
 Holland Park
 St Albans Masorti Synagogue (SAMS)
 St Mary & St Archangel Michael Coptic
 Orthodox Church
 St Paul's Church, Marylebone
 St Teresa's Catholic Primary School
 St. Albans Masorti Ladies
 St. Albans Masorti Synagogue Cheder
 St. John's Wood Synagogue
 St. John's Wood Synagogue –
 Kindergarten in the Wood
 St. John's Wood Synagogue Cheder
 St. Wilfrid's RC Primary School
 Stanmore and Canons Park Synagogue
 Stanmore and Canons Park Synagogue
 Cheder
 Stanmore and Canons Park Synagogue
 Mitzvah Mummies
 Stevenage Liberal Synagogue (formerly
 North Herts)

Kol Hakavod to our Mitzvah Day Partners

Stowting CEP School
 Sukkat Shalom Reform Synagogue
 Telereal Trillium
 The Ark Synagogue
 The Ark Synagogue KT Class
 The Friends of Harrow Weald
 The Friendship Circle
 The Hale and District Hebrew Congregation
 The King David High School (Manchester)
 The Liberal Jewish Synagogue
 The Liberal Jewish Synagogue Cheder – Rimon
 The Liberal Jewish Synagogue Nursery
 The Liberal Synagogue, Elstree
 The Liberal Synagogue, Elstree Cheder
 The Village Shul Hampstead
 The Village Shul Hampstead Cheder
 The West London Synagogue
 The West London Synagogue Cheder
 The Zone
 Three Counties Liberal Jewish Community (TCLJC)
 UJIA
 UJS
 Unitas
 University of Bristol Jewish Society
 University of Exeter Jewish Society
 University of Glasgow Jewish Society
 University of Leeds Jsoc
 University of Warwick Jewish-Israeli Society
 Village of Hawkshead
 Watford and District Synagogue
 Watford and District Synagogue Cheder
 Wessex Liberal Jewish Community
 West Cumbria Youth Council Cumbria County Council
 Westminster Synagogue
 Westminster Synagogue Cheder (Or Shabbat)
 Whitefield Hebrew Congregation
 Wimbledon Synagogue Cheder
 Winchester's Jewish Community and Friends
 Wohl Ilford Jewish Primary School
 Wohl Ilford JPS Nursery
 Wolfson Hillel Jewish Primary School
 Wolfson Hillel JPS Nursery
 Woodside Park Synagogue
 Woodside Park Synagogue Cheder
 Worcestershire Interfaith Forum
 World Jewish Relief
 Yavneh College
 Yavneh Primary School

Yeshurun Federation Synagogue
 Yeshurun Hebrew Congregation Gatley
 York Liberal Jewish Community

International Organisations

Athens Jewish Community
 Belarus – The Together Plan Communities
 Comunidad Judia de Alicante
 Comunidad Judia de Ceuta
 Comunidad Judia de Galicia
 Comunidad Judia de Girona
 Comunidad Judia de Majorca
 Comunidad Judia de Malaga
 Comunidad Judia de Melilla
 Comunidad Judia de Murcia
 Comunidad Israelita de Barcelona
 Comunidad Masorti Bet El
 Frankel Leo Street Synagogue
 Galicia Jewish Museum
 Jersey Jewish Congregation
 Jewish Community Centre of Krakow (JCC)
 Jewish Community of Bermuda
 Jewish Reform Congregation Shirat ha-yam
 J-Teen Leadership/ UJA Fed of NY
 Judaisme en Mouvement – Talmud Tora
 Kehila Beit Emunah Asturias
 Lauder Athens Jewish Community School
 Lauder Morasha Jewish School
 Maccabi Deutschland e.V.
 Maccabi Monferrato
 Maccabi-Ukraine
 MAZSIHISZ Federation of Jewish Communities in Hungary
 National Council of Jewish Women of Canada – Edmonton Section
 National Council of Jewish Women of Canada, Toronto
 National Council of Jewish Women of Winnipeg
 Neder
 Shir Hatzafon
 Temple Shir Shalom (Florida)
 The Jewish Council of North Central Florida (JCNCFL)
 The Jewish Youth of Athens
 The Lubavitch-Chabad Jewish Student & Community Center (Florida)
 Union of Jewish Women, Cape Town
 Union of Jewish Women, Johannesburg

University of Florida Hillel
 Windhoek Hebrew Congregation

Mitzvah Day Satellite Offices

Mitzvah Day Australia Satellite Office
 Mitzvah Day Brasil Satellite Office
 Mitzvah Day Germany Satellite Office
 Mitzvah Day Latin America – LAZOS Satellite Office
 Mitzvah Day South Africa Mensch Satellite Office

Key Partner Charities

ADI
 AJEX
 All Aboard Shops
 Camp Simcha
 Childs Hill Food Bank
 Comfort Cases UK
 DKMS
 Fans Supporting Foodbanks
 Feast With Us
 Food Bank Aid
 GIFT
 Goods for Good
 Gratitude
 Help & Hope the Homeless Herts & London
 Jami
 Jewish Care
 JLiving
 Light Up A Life
 Little Village
 London Wildlife Trust (Walthamstow)
 Lord's Taverners
 Marys Meals
 Norwood
 Reach Out Hertfordshire
 René Cassin
 Resuscitation Council UK
 Save a Child's Heart
 Screen Share UK
 Sebbys Corner
 Smalls for All
 St John's Hospice
 Sufra NW London
 The Bike Project
 The Joely Bear Appeal
 The Separated Child Foundation
 The Together Plan
 White Rose

**Mitzvah
Day**

Save the date!

20th November 2022

It's never too early to start planning for Mitzvah Day
- so get ready for 20th November 2022!

There are also opportunities to volunteer all year
round, just check out the Available Projects page on
the Mitzvah Day website: www.mitzvahday.org.uk

Please get in touch for ways you can support great
charities throughout the year.

Pears
Foundation

SHORESH
TRUST

 clare duffield foundation

THE
JC
THE JEWISH CHRONICLE

 **AJEX**
THE JEWISH RELIEF
AND CHARITY

3rd Floor, 207 Regents Street, London, W1B 3HH |   @MitzvahDayOfficial |  @MitzvahDay
+44 20 3747 9960 | info@mitzvahday.org.uk | www.mitzvahday.org.uk | Charity no. 1125682